

EnPro Project Management

Ensuring successful delivery of Traction & Rolling Stock (T&RS) projects and vehicle modifications through a passion for quality and customer satisfaction.

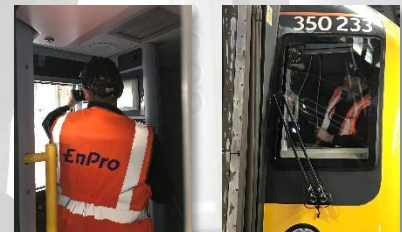
EnPro project management capabilities include:

- ☑ New technology installation
- ☑ Electrical / mechanical modifications
- ☑ Maintenance and overhaul activities
- ☑ Refurbishment and refresh works
- ☑ Corrosion and structural / incident repair
- ☑ Interior and exterior repaint

Recent Projects

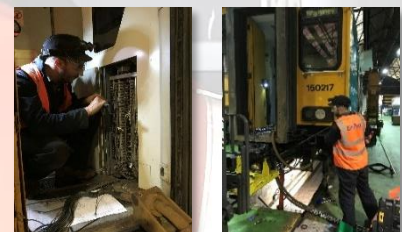
January 2018

Fitment of FFCCTV to a London Northwestern Railway Class 350 Desiro Electric Multiple Unit (EMU) at Northampton Kings Heath Depot under sub-contract to DB ESG



November 2017

Reconfiguration of a 2 car Arriva Trains Wales (ATW) Class 150 Sprinter Diesel Multiple Unit (DMU) to create a 3-car hybrid set at Cardiff Canton TMD under sub-contract to DB ESG



August 2017

Provision of experienced technical labour to support the fitment of CCTV Pan Cams to two Virgin Trains (West Coast) Class 390 Pendolino Electric Multiple Units (EMUs) at Wembley (London) and Manchester (Longsight) Traincare Centres



July 2017

First in Class (FIC) fitment of FFCCTV / CCTV Pan Cams to a GBRf Class 92 multi system electric locomotive at Falcon Works Loughborough

